

LED**SIGN** BUYER'S **GUIDE**

 **ThinkSIGN**
IT'S SO **EASY**





DERBY CITY
GAMING
NOW
OPEN



DERBY CITY
PLAYERS CLUB

DERBY CITY
PLAYERS CLUB

DERBY CITY
PLAYERS CLUB

DERBY CITY
PLAYERS CLUB

DERBY  CITY
G A M I N G

Where it all
began



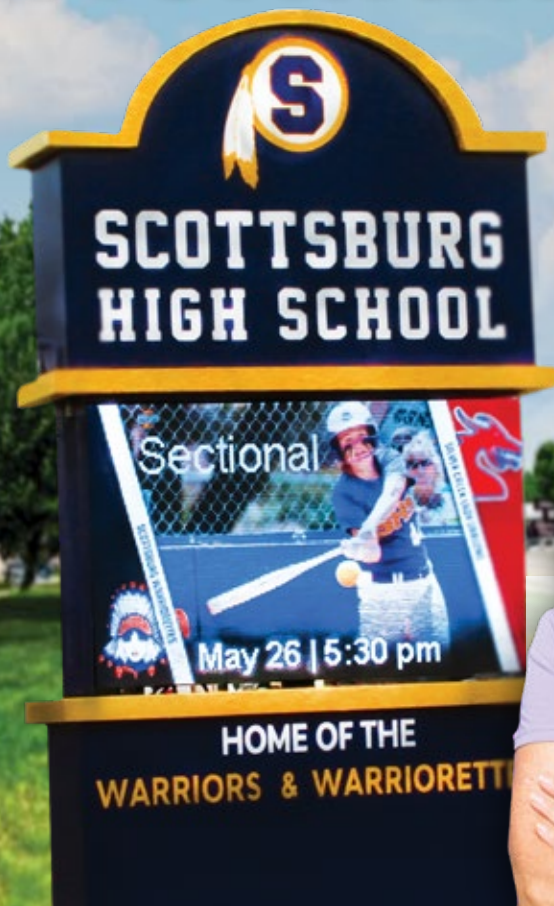
25 YEARS

DESIGNING & MANUFACTURING
OUTDOOR LED SIGNS

Louisville, KY

A nighttime photograph of the Louisville, Kentucky skyline. The central focus is the illuminated dome of the Kentucky State Capitol building, which is lit with a warm yellow light. To the left and right are several modern skyscrapers with their windows glowing with light. The sky is a deep blue, and the overall scene is a vibrant cityscape at night.

The Best **Performance**



The kids and parents love our sign. We promote events and recognize individuals' achievements lit up for all to see, which is amazing for our community. We even use it to direct carpool and parking which keeps things running smoothly.

- Denise B.
Principle

Superior Quality

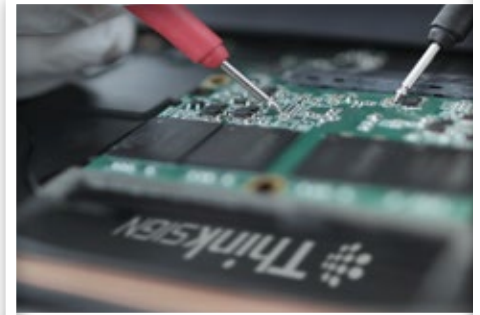
We are an **Original Design Manufacturer (ODM)** with end-to-end control of every detail of our signs. Our founder is our Chief Engineer. Your ThinkSIGN is incredibly reliable, lasting over 10 years, with ultimate image quality and energy efficiency.

Industry Leading Software

We make creating powerful, engaging content for your sign easy. Our proprietary Studio Cloud is the **industry's first full function, fully mobile EMC software**. Design, edit, and schedule content in minutes from any device, anywhere you are.

Unbeatable Support

Where others have third-party call centers, our support technicians are in-house engineers. Whether it's a live demo, technical support, or field assistance, we have the utmost commitment to serving our partners and end users.





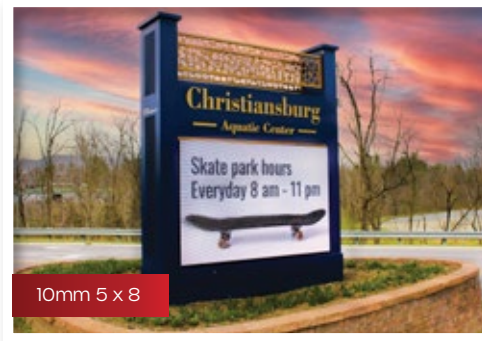
10mm - 15 x 10



10mm - 30 x 10



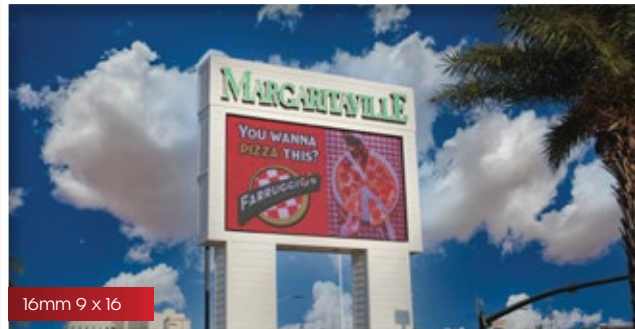
10mm 4x6



10mm 5 x 8



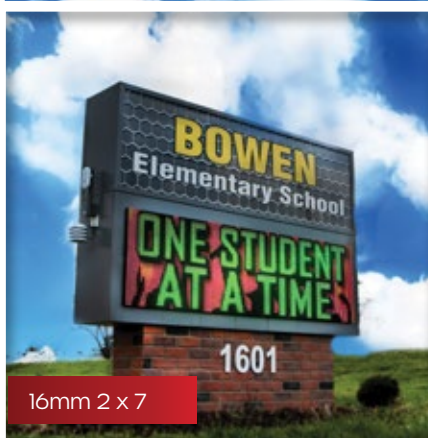
10mm 10 x 8



16mm 9 x 16



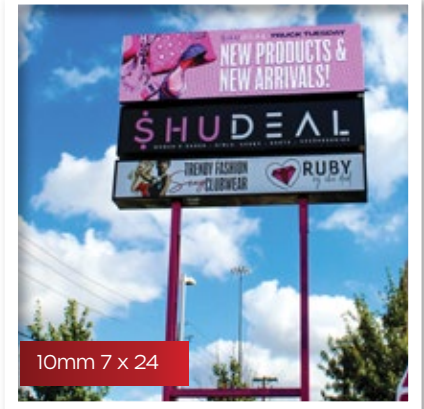
10mm 4 x 8



16mm 2 x 7



10mm 8 x 16



10mm 7 x 24

We Design

Long Lasting **Signs**

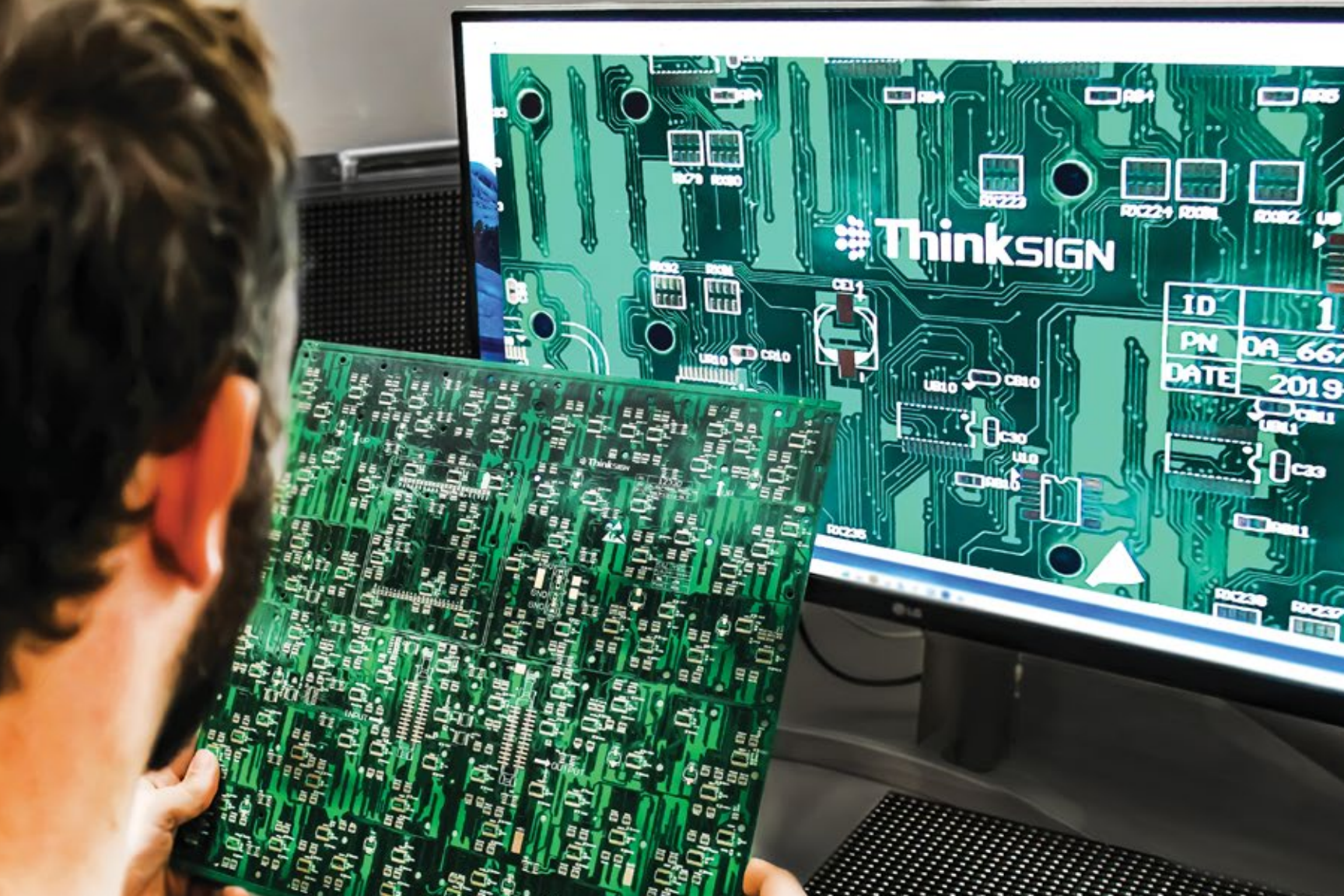
Each and every LED is gold soldered and sealed in silicon right in our factory, so that year after year and against heat, ice, water, and wind, your ThinkSIGN EMC will continue to stand as a powerful beacon for your message and your ROI will continue to grow.

Easy, Intuitive **Software**

Rather than third-party software, we've spent over a decade designing and innovating our own, proprietary EMC software to be the best, most effective way to work with your sign.

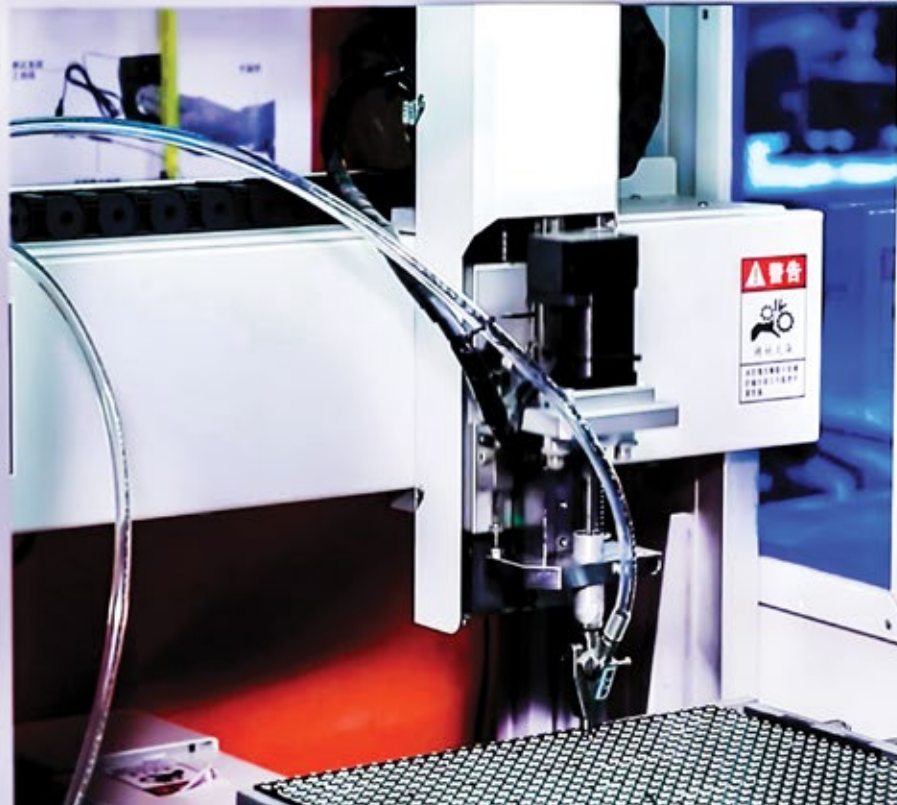
Exemplary **Support**

Only a true ODM like ThinkSIGN can protect you from parts obsolescence. In a sea of resellers, the greatest risk is, because third-parties do not design and manufacture their own components, they can't guarantee future parts. With first-party everything, ThinkSIGN always has what it takes to keep your sign running.



ID	1
PN	DA_667
DATE	2019

 **ThinkSIGN**



We **Manufacture**

When you invest in a ThinkSIGN EMC, you can rest assured that you are making a low-risk investment that will pay off for many years to come. That's because, as a true ODM, our end-to-end process affords us incredibly valuable benefits like:



Superior Sourcing

We're there, boots on the ground, selecting with an expert eye materials that are second to none.



End-to-End Control

Unlike resellers, we control design, production, and support of every component of every sign. Our 25 years of our know-how is your peace of mind. So, if you need any service or upgrade, we can always precisely meet your needs.



Software Design

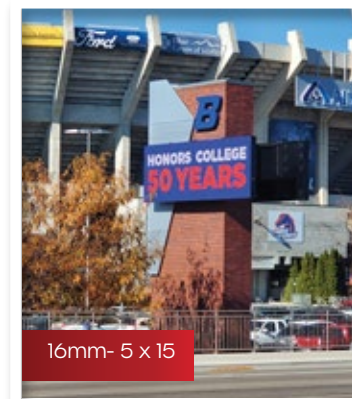
The easiest EMC software you'll find anywhere. It's full function, fully mobile, from any device, with nothing to download. Works seamlessly with our signs because, well, we created it!



First-Party Everything

Excellence - That's our only standard. By designing and manufacturing everything ourselves, we ensure quality, consistent performance and leave nothing to chance.

Our Gallery

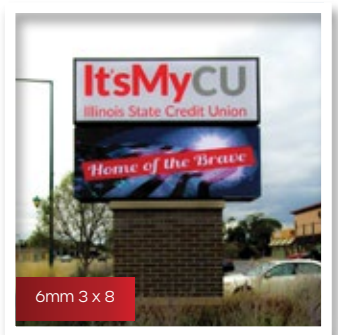




6mm 6 x 12



10mm 4 x 8



6mm 3 x 8




10mm 3 x 7



16mm 6 x 15

The Industry's Best **EMC** Software



- First and only full function mobile software for LED Signs
- Easiest to use - Quick, convenient, intuitive features
- Supports Mac, Windows, iOS, Android 
- Proprietary cloud software design offers unparalleled experience
- No setup necessary



*Offline version available

MARGARTAVILLE

YOU WANNA
PIZZA THIS?



Start...Edit...**Sync**

Value in
Simplicity



Change content in a **minute...**

We Make Your Job

Easy

Over 100 curated fonts

Add text effects with a click!

Full library of animations

to bring life to your design

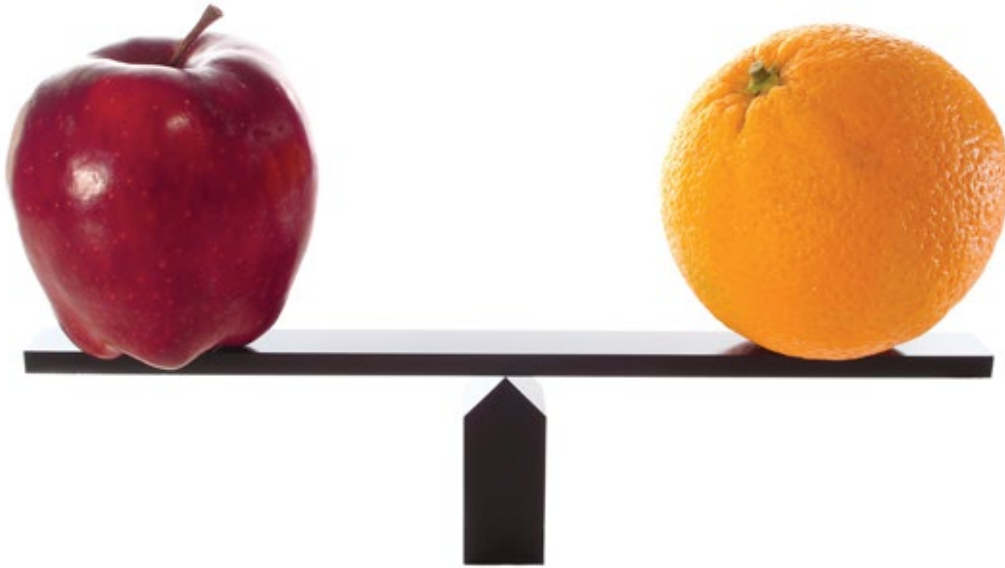
Choose from thousands

of photos and illustrations



No designer? **No problem!**

Software is the
Soul of Your Sign



Compare before you buy

More than half
a sign's value
is its software.

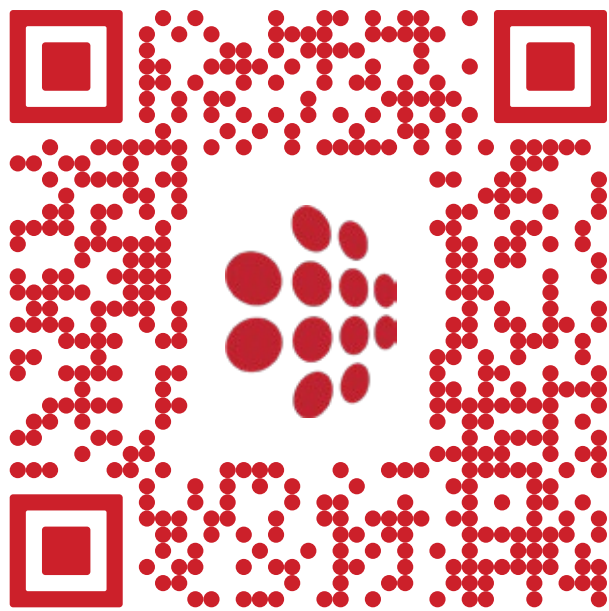
When you buy an EMC, you're stuck with **manufacture's software**. And that software is the **ONLY** way you interact with your sign...for the life of the sign.

It could be a bad experience that lasts.

We highly recommend that you compare software before making such an important investment.



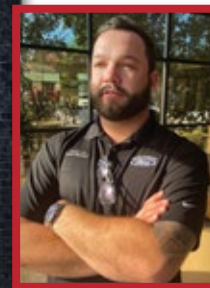
8 out of 10 people who compare software chose ThinkSIGN.  **8/10**



Try our software **now**

“The **simplicity & capabilities** of the software were the deciding factor.”

-Daniel Lee
Woody Anderson Ford



A Good Sign For Your

ROI



Choosing the Right Sign

more pixels = more detail

20mm



Increase in
Pixels

16mm



+56%
more than 20mm

13mm



+45%
more than 16mm

10mm



+77%
more than 13mm

6mm



+125%
more than 10mm

Resolution Made Easy

You know when you zoom in on a photo and it gets blurry pretty quickly? And then with another photo, you can zoom in on a baby's eyelash and it stays super crisp? **That's resolution** - the higher the resolution, the more detail in the image. But if you're never going to zoom in, the picture looks fine as it is. That's basically how to choose a sign - The closer to your sign the audience will be, the more detail you'll need.

The higher the resolution
the greater the value



Seeing is **Believing**

Schedule your demo today
Get answers, **face-to-face**.

Just **call us** 
877.767.9949



A Lifetime of **Support**



“Every time I call for assistance, I get a resolution and great customer service! Their techs are professional engineers. And I always learn new things to make my content better.”

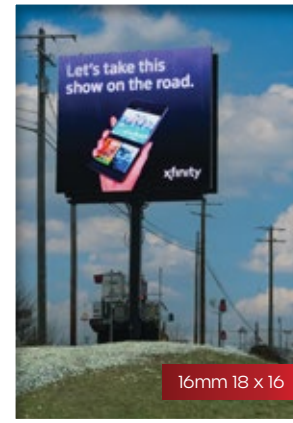
Sydney K.



10mm 4 x 6



16mm 3 x 7



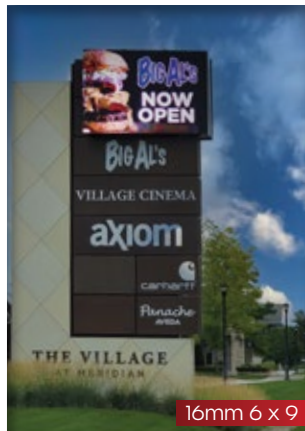
16mm 18 x 16



10mm 3 x 7



16mm 8 x 16



16mm 6 x 9



10mm 5 x 10



10mm - 5 x 10



16mm 6 x 14

 **ThinkSIGN**
IT'S SO **EASY**

877.767.9949
marketing@thinkSIGN.com

